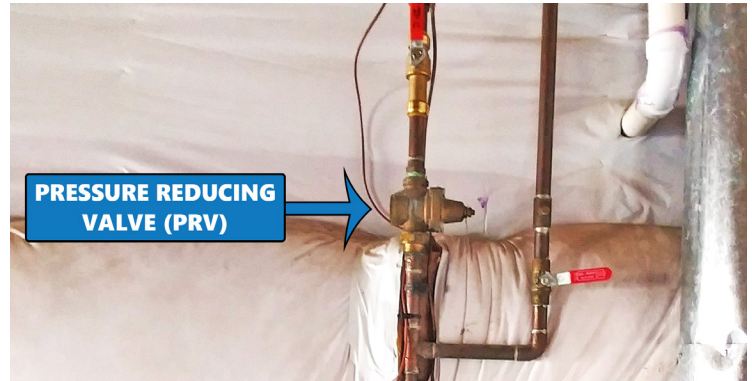


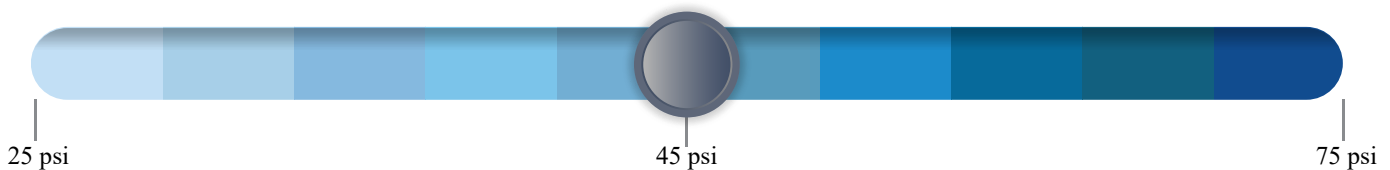
PRESSURE REDUCING VALVES

Pressure Reducing Valves (PRVs) are a type of valve installed in a home's plumbing to regulate water pressure. The purpose of a PRV is to reduce incoming water pressure from ECCV's water mains to a pressure that is safe for a home's plumbing system. PRVs are also a water conservation tool. By avoiding higher pressure, water is conserved. In most developments in the ECCV service area, the PRV is typically installed at the water service entry point to the home, after the first shutoff valve.



What is typical water pressure for your home?

ECCV's standard specifications state the static pressure should be no greater than 80 pounds per square inch (psi). Most residential PRVs have an operating range between 25-75 psi and are preset at the factory at about 45 psi.



Signs your PRV is no longer working properly

Some signs that something may be wrong with the PRV in your home include:



A sudden loss, or gradual reduction, in water pressure within the home for no apparent reason



Banging or high-pitched whistling sound coming from the pipes, usually when the water is being turned off.



Noticeably higher pressure at the faucet



Toilets that continue to run after the bowl is filled

If you are unsure if your PRV is working properly ECCV will perform a free pressure check upon request. Please call our office at 303-693-3800.

How to adjust or repair a PRV

The PRV is part of the home's plumbing and is the property of the homeowner. A new PRV can be purchased at most hardware or home supply stores. Most PRVs can be adjusted to accommodate individual needs. Since each PRV is slightly different, it's a good idea to get more information about your PRV from the manufacturer's website. Another option is to contact a plumber to have your PRV adjusted or a have new PRV installed.



ECCV

Water & Sanitation District